

Cellwatch Battery Monitoring

Technical Application Note



Tech20060408-1-1

Cellviewer.htm

Cellwatch iBMUs broadcast a web page summary of battery data in HTML (Hyper Text Markup Language) format over its Ethernet network connection on port 80. This web page has a number of derivative web pages some hyperlinked from the home page, some not.

It is possible using a simple HTML script to combine a number of the iBMU Cellwatch web pages into a single web page so that a single computer can display a number of Cellwatch web pages summary information in a single screen.

The HTML code can be downloaded from the Cellwatch.com web site and is pre-configured for 2, 3, 4, 5 or 6 iBMUs. All that is necessary is for the user to put the code onto the desktop of the viewing computer, edit it with the IP addresses of the iBMUs and the specific names of the Cellwatch locations (Battery Room A, Building J etc) and then run the code by double clicking. The code will then run in the default web browser on the computer. NOTE, this code has only been tested in Windows Explorer 6.0. It is recommended that a link is made to this code from the start-up folder of the computer so it starts when the computer is rebooted.

This code is offered free to use and distribute but is warranty free. It is only designed to operate on a Windows XP computer running Windows Explorer V6.0. No support is offered with this code.

If more sophistication is required, NDSL can supply CellWeb Viewer, a fully functional data base driven application that provides similar functionality but also includes audible alarms, alarm memory, printable reports. This will be available in late 2006.

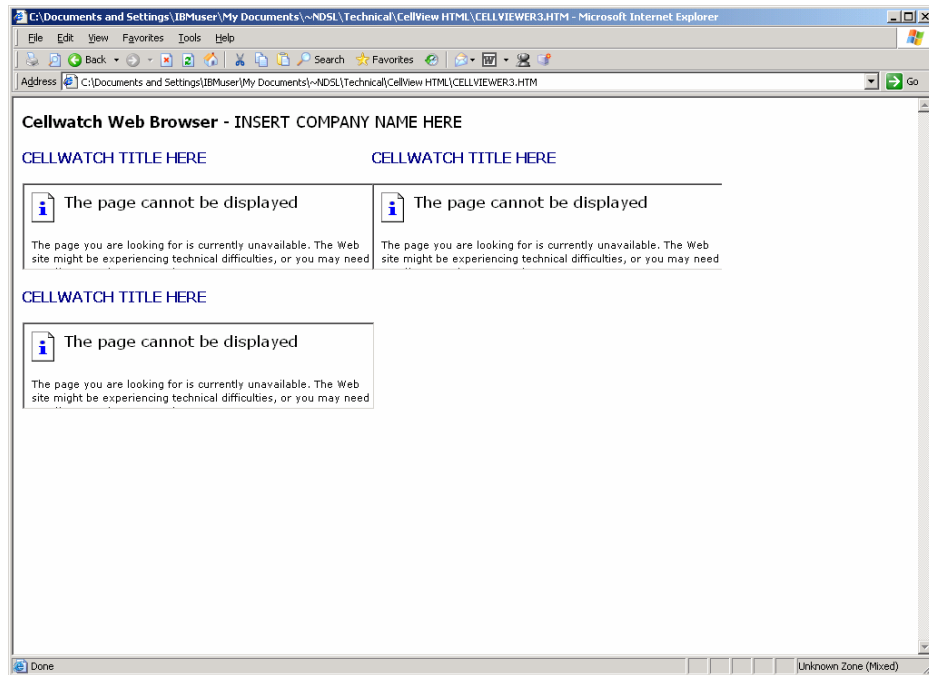
The Code

HTML is an easy code to understand and is editable on any PC with WordPad or Notepad installed.

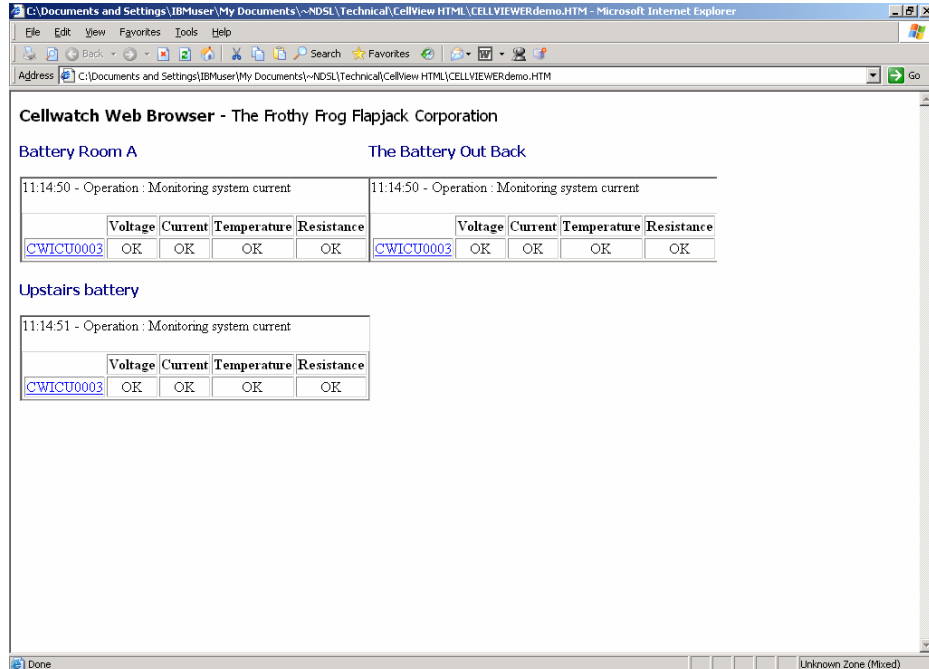
The code uses a simple table format to position 2, 3, 4, 5 or 6 small windows on a page, two wide by how ever many deep. Each small window or iframe looks at a Cellwatch iBMU and should have a unique IP address and site name. You, the user will have to edit the code and change those IP addresses and site names. You may also want to give the entire page a name. The facility exists to do that also.

1. Go to www.cellwatch.com/apnotes and download the correct size package that you need.
2. Unzip it and put the code onto the desktop.
3. Make a list of the following:
 - a. Your company name
 - b. The site name for each Cellwatch iBMU and its associated IP address.

See below



This is how the unfinished browser window will look and below how it will appear if edited correctly for your installation.



- Open the HTM file in WordPad by right clicking and familiarize yourself with the code.
- The text you must change is in capitals.

6. Find INSERT COMPANY NAME HERE and replace with your company name – or delete it.
7. Find each iFrame. These start with a <td> tag and ends with a </td> tag.
8. In each iFrame replace CELLWATCH TITLE HERE with your battery room name.
9. In each iFrame change the IP address to a corresponding valid IP address of the battery room Cellwatch. See Below.....

```

<body>

<p>
<b><font face="Tahoma" size="4">Cellwatch Web Browser</b> <div style="border: 1px solid black; padding: 2px; display: inline-block;>INSERT COMPANY NAME HERE</div></p>

<table border="1" cellpadding="0" cellspacing="0" style="border-collapse: collapse; width="770">
<tr>
<td width="50%" style="border-style: none; border-width: medium"><b>
<font color="#000080" face="Tahoma"><b>CELLWATCH TITLE HERE</b></font></b><p>
<iframe name="I1" width="388" height="96" marginwidth="0" marginheight="0" align="left" frameborder="1" scrolling="no"
src="http://199.0.1.186/info"
target="_top">
Your browser does not support inline frames or is currently configured not to display inline frames.</iframe>
</b></font></td>
<td style="border-style: none; border-width: medium; width: 20px; text-align: right; vertical-align: top; padding-right: 5px;>11111"
</td>
</tr>
<tr>
<td width="50%" style="border-style: none; border-width: medium">
<font color="#000080" face="Tahoma"><b>CELLWATCH TITLE HERE</b></font><p>
<iframe name="I2" width="388" height="96" marginwidth="0" marginheight="0" align="left" frameborder="1" scrolling="no"
src="http://199.0.1.186/info"
target="_top">
Your browser does not support inline frames or is currently configured not to display inline frames.</iframe>
</b></font></td>
<td style="border-style: none; border-width: medium; width: 20px; text-align: right; vertical-align: top; padding-right: 5px;>
</td>
</tr>
<tr>
<td width="50%" style="border-style: none; border-width: medium">
<font color="#000080" face="Tahoma"><b>CELLWATCH TITLE HERE</b></font><p>
<iframe name="I3" width="388" height="96" marginwidth="0" marginheight="0" align="left" frameborder="1" scrolling="no"
src="http://199.0.1.186/info"
target="_top">
Your browser does not support inline frames or is currently configured not to display inline frames.</iframe>
</b></font></td>
<td style="border-style: none; border-width: medium; width: 20px; text-align: right; vertical-align: top; padding-right: 5px;>
</td>
</tr>
</table>

</body>

</html>

```

For Help, press F1

Save the file back onto the Desktop and run it by double clicking it.